

## 2SK Liquid Ring Vacuum Pump



2SK series liquid ring vacuum pumps(double stage liquid ring vacuum pump) are used for exhausting and compressing air and other noncorrosive, water insoluble and solid particle-free gases so as to create vacuum and pressure in closed containers. A little liquid is allowed in the gas.

2SK series liquid ring vacuum pumps have included secondary impellers and pump cavities to increase vacuum by serial connection. The pumps have high exhaustion capacity under high vacuum degree. The 2SK water ring pumps can also be connected with air ejector, the limiting vacuum combined with air ejector can be up to -740mmhg, ( - 0.098Mpa), and the absolute pressure is about 2660pa. Furthermore, the 2SK water ring vacuum pump can be combined with Roots vacuum pumps as well to combine liquid ring-roots vacuum unit with a wider application range due to the high ultimate vacuum of 0.5Pa.

Main features:

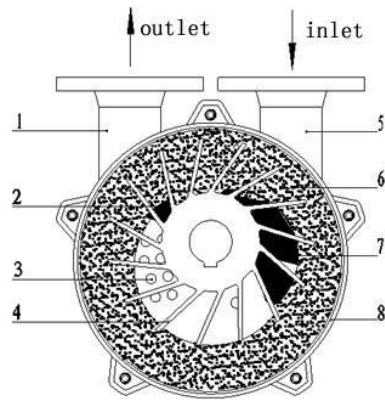
Compact structure and convenient maintenance;

Wide application range, which applicable for gas with vapor or flammable, explosive, containing a little dust and a little liquid gas.

Low maintenance expense since water is the main operating medium;

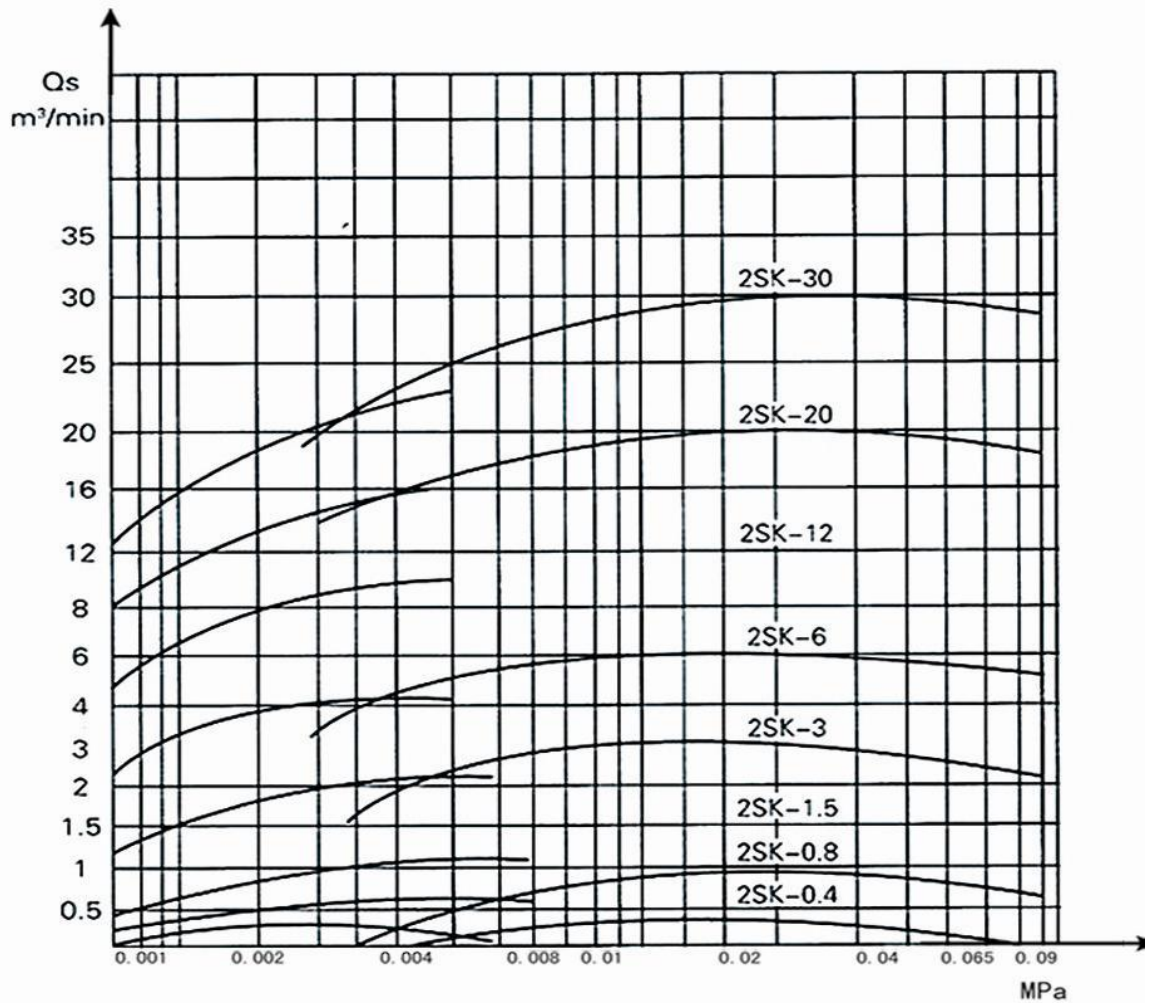
Applicable in severe environments.

Model	Suction capacity	Ultimate vacuum	Power	speed	Water supply	Inlet/outlet diam	Water inlet
	m <sup>3</sup> /min	MPa (G)	KW	r/min	L/min	DN(mm)	(mm)
2SK1.5	1.35	-0.097	4	1440	10-15	40	G1/2"
2SK-3	2.7	-0.098	7.5/11	1440	15-20	40	G1/2"
2SK-6	5.4	-0.098	15	1460	25-35	65	G1/2"
2SK-12	10.8	-0.098	22/30	970	40-50	100	G1/2"
2SK-20	18	-0.098	45	740	60-80	125	G3/4"
2SK-30	27	-0.098	55/75	740	70-90	125	G3/4"



- 1. exhaust pipe
- 2. exhaust hole
- 3. valve port
- 4. impeller
- 5. intake pipe
- 6. water ring
- 7. suction hole
- 8. pump body

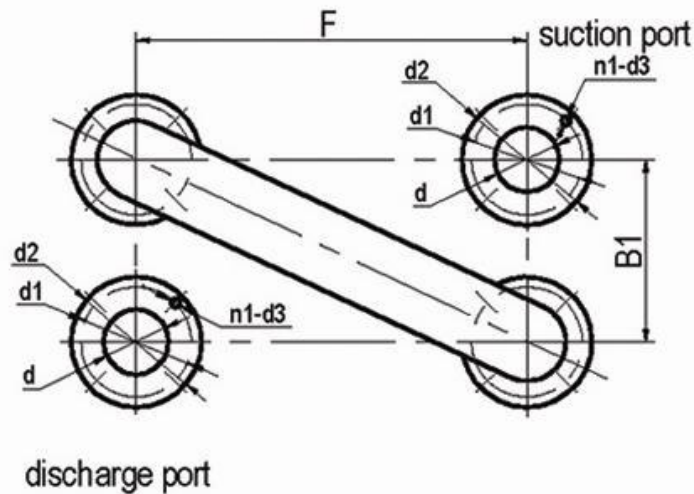
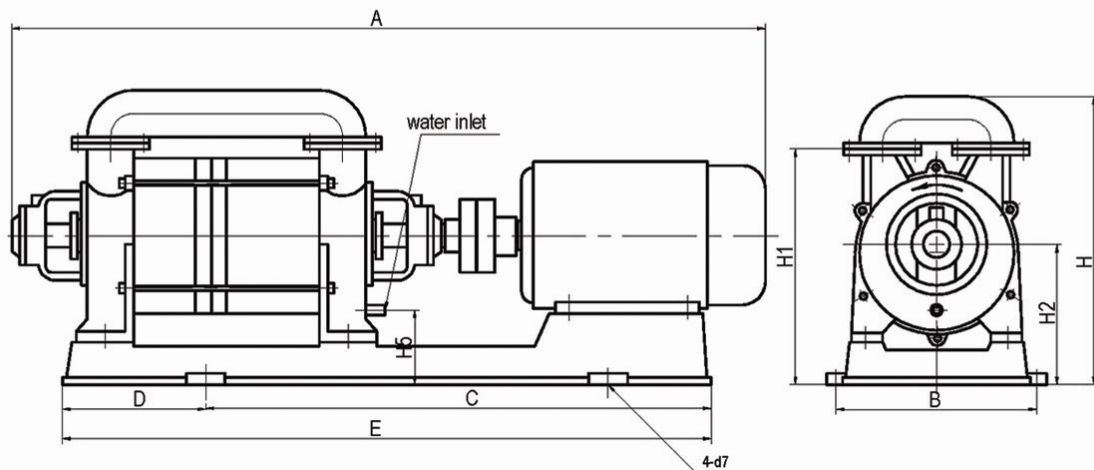
## 2SK series performance curve



NOTE: The 2SK water ring vacuum pump performance curve is obtained under the following condition:

1. Suction temperature 20°C
2. Operating liquid temperature 15°C
3. Discharge pressure: a standard atmospheric pressure (1013mbar)
4. Medium to be pumped: saturated air
5. Tolerance: ±10%.

# 2SK dimension drawing (UNIT:MM)



Model	A	B	B1	C	D	E	F	H	H1	H2
2SK-1.5	1151	370	162	600	220	940	264	483	409	257
2SK-3	1346	400	162	710	270	1160	344	483	409	257
2SK-6	1623	420	210	863	300	1391	430	608	500	315
2SK-12	1965	520	280	1037	375	1620	600	761	625	385
2SK-20	2306	600	350	1220	409	1890	619	1017	865	540
2SK-30	2715	720	350	1380	450	2138	749	1017	865	540